



KANU EQUIPMENT

EXPERIENCE THE SUPPORT

GROUP COMPANY PROFILE | MINING



KANU EQUIPMENT

EXPERIENCE THE SUPPORT

The story of Kanthu N'khama is an African folklore tale about a small bird that flies into a dark forest and overcomes challenges to emerge wiser and more resilient. It is the story of how 'Hard work pays off' and is the inspiration behind Kanu Equipment. Launched in 2012, Kanu Equipment and its hummingbird logo stands for the 800 men and women across Africa that live by the founding values of integrity, flexibility, continuous improvement and exceptional customer service.



OUR VISION



At Kanu Equipment we pride ourselves on our ability to provide top-of-the-range machinery, world-class maintenance teams and high spare part availability across 17 countries in Africa.

OUR VISION - To be the Most Supportive Dealership on the African Continent.

OUR MISSION - We aim to reduce the cost of operations on the continent by providing innovative solutions, timeous on-site technical support and access to a wide range of genuine OEM spare parts.

Our entrenched relationships with **Liebherr, Bell, McCloskey, MacLean, and Drillcube,** and our competent, highly skilled service technicians puts us in the prime position to offer the very best customer service and support with minimal machine downtime, maximum output and a positive ROI.

Our vast experience in underground and open cast mining affords us the utmost confidence to support any operation in the toughest of African climates and territories.

Our facilities are professionally staffed and well-equipped to support you when and where it matters most.

A handwritten signature in black ink, appearing to read 'S. Smithyman', positioned above a horizontal line.

STEPHEN SMITHYMAN
Group CEO



STEPHEN SMITHYMAN
Group CEO

OUR VALUES



We will not compromise our values, ethics, integrity, passion or professionalism in our dealings with all stakeholders.



ACCOUNTABILITY

We are involved, responsible and dedicated to our organisation, its investors and our customers.



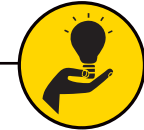
INTEGRITY

We are committed to being honourable and disciplined.



COURAGE

We are bold, always striving to believe in bigger and better achievements.



INNOVATION

We are determined to find the best available solutions to solve problems quickly and effectively.



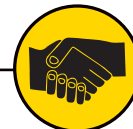
SUPPORT

We are in the industry of service and know that our primary focus on offering the very best levels of support is what sets us apart from our competitors.



LEADERSHIP

We endeavour to work smartly, always finding ways to improve our service offering, to do more – faster.



PARTNERSHIP

We try to find common ground in all our interactions, as we all like to work with people that we can relate to.



COMMITMENT

We are deadline-driven to achieve maximum productivity on all levels.

OUR RAPID EXPANSION

Kanu Equipment began its work in 2012 and the company's reputation of providing strong customer support and reliable equipment and spares is expanding into Africa and even further across the globe.

 **2012**

Kanu Equipment was founded in the CONGO with the purchase of a much sought-after LIEBHERR DOZER, the first of its kind in central Africa.

 **2013**

Dealership rights for LIEBHERR EARTHMOVING and MOBILE CRANES and BELL were awarded.

 **2014**

Opened the IVORY COAST and GHANA dealerships.

 **2015**

Branched into SIERRA LEONE, LIBERIA and CAMEROON and adopted the WIRTGEN and TIGERCAT brands.

 **2016**

Took ownership of the BOTSWANA dealership and claimed a 50% stake in the ZIMBABWE branches.

 **2017**

Expanded into KENYA and TANZANIA and adopted the CASE IH and CASE CE brands in certain territories.

 **2018**

Took ownership of the NAMIBIA dealership and opened in the DRC.

 **2019**

Adopted the MANITOU brand in Botswana and NORMET brand in certain territories.

 **2020**

COVID OUTBREAK didn't break the Kanu spirit and we continued strong throughout the pandemic so our customers could "Experience The Support"

 **2021**

Expanded into UGANDA and RWANDA

 **2022**

Kanu Equipment turns 10 years old - and going strong

 **2023**

Acquisition of KEMACH EQUIPMENT South Africa. Adopted the MCCLOSKEY, BOMAG and KEMACH FORKLIFTS brands in certain territories and NEW HOLLAND* (South Africa ONLY). Expanded into ZAMBIA.

 **2024**

Adopted the SUPERIOR brand in certain territories. Expanded into MALI.

 **2025**

Adopted the HYUNDAI brand in Zambia ONLY. Adopted the MACLEAN & DRILLCUBE brands.



2026 & BEYOND

With our continual support and hard work in earning our OEM's and Customer's trust, there are no limits to where Kanu Equipment can go from this point on - The Bird has spread it's wings and there is no stopping it now.

OUR VISION "To be the Most Supportive Dealership on the African Continent" is currently being realised.

OUR KEY NUMBERS



Kanu Equipment has **800 EMPLOYEES** who are dedicated in providing timeous SERVICE DELIVERY and superior CUSTOMER SUPPORT.



80% Aftermarket Parts Market needs fulfillment

80% fulfillment of Market Equipment needs

85% on time parts delivery



presence in

17 COUNTRIES

across Africa



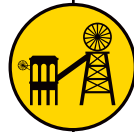
1 FOCUSED mindset



3 TRAINING CENTRES (regional)



+80M \$ invested



10 WORLD-CLASS MINES supported



25 WORKSHOPS across the group



more than **170** qualified **TECHNICIANS**



2140 FLEET (active)
300 MODELS (various)



FOCUS AREAS



Access to Finance with Best Interest and Payment Terms



OEM & Aftermarket Spares



Dedicated Technical Teams

OUR NETWORK & TEAMS



Kanu Equipment has expanded into **17 COUNTRIES**, organised as regional teams, supported by Finance in Mauritius and Sales in Europe.

Our teams are dedicated to performance delivery and service excellence at its best. We live true to our motto “EXPERIENCE THE SUPPORT” which resonates from the CEO throughout the organisation.



OUR SERVICE & SUPPORT PROMISE



We at Kanu Equipment are dedicated to the supply of competitively priced spare parts and maintenance support to offer our customers an advantageous extension to their business operations. We guarantee 24/7 support with a maximum 48hr delivery promise on top-line stock items held in country.

We hold local in-house OEM product and technical training, and apprenticeship programmes.

We offer:



STRONG OEM PARTNERSHIPS



LOCAL UPSKILLING PROGRAMMES



SKILLED ON-SITE SUPPORT



ON-SITE SPARES AVAILABILITY



REAL-TIME EQUIPMENT MONITORING



OPERATOR SUPERVISION



IMMEDIATE RESPONSE



STREAMLINED LOGISTICS



MINING

With 50 years' experience in design, manufacturing and support of mining machinery, **LIEBHERR** works tirelessly to provide options that add value and can be adapted to customers specific requirements. Quality, reliability, and innovative technologies ensure that mining operations are safe, time and cost efficient at all times – even under the toughest of conditions.

LIEBHERR offers a well balanced range of hydraulic excavators. Beginning with the compact excavators to medium sized machines all the way up to large machines for the mining industry. Due to their state-of-the-art technology, **LIEBHERR** excavators set new standards in performance, environmental friendliness and ease of maintenance.

LIEBHERR strives to meet the highest expectations by providing exceptional service and high-quality interaction, all over the world.



- WHEELED/CRAWLER EXCAVATORS • CRAWLER TRACTORS/BULLDOZERS
- WHEEL LOADERS • RAILROAD EXCAVATORS • MATERIAL HANDLERS

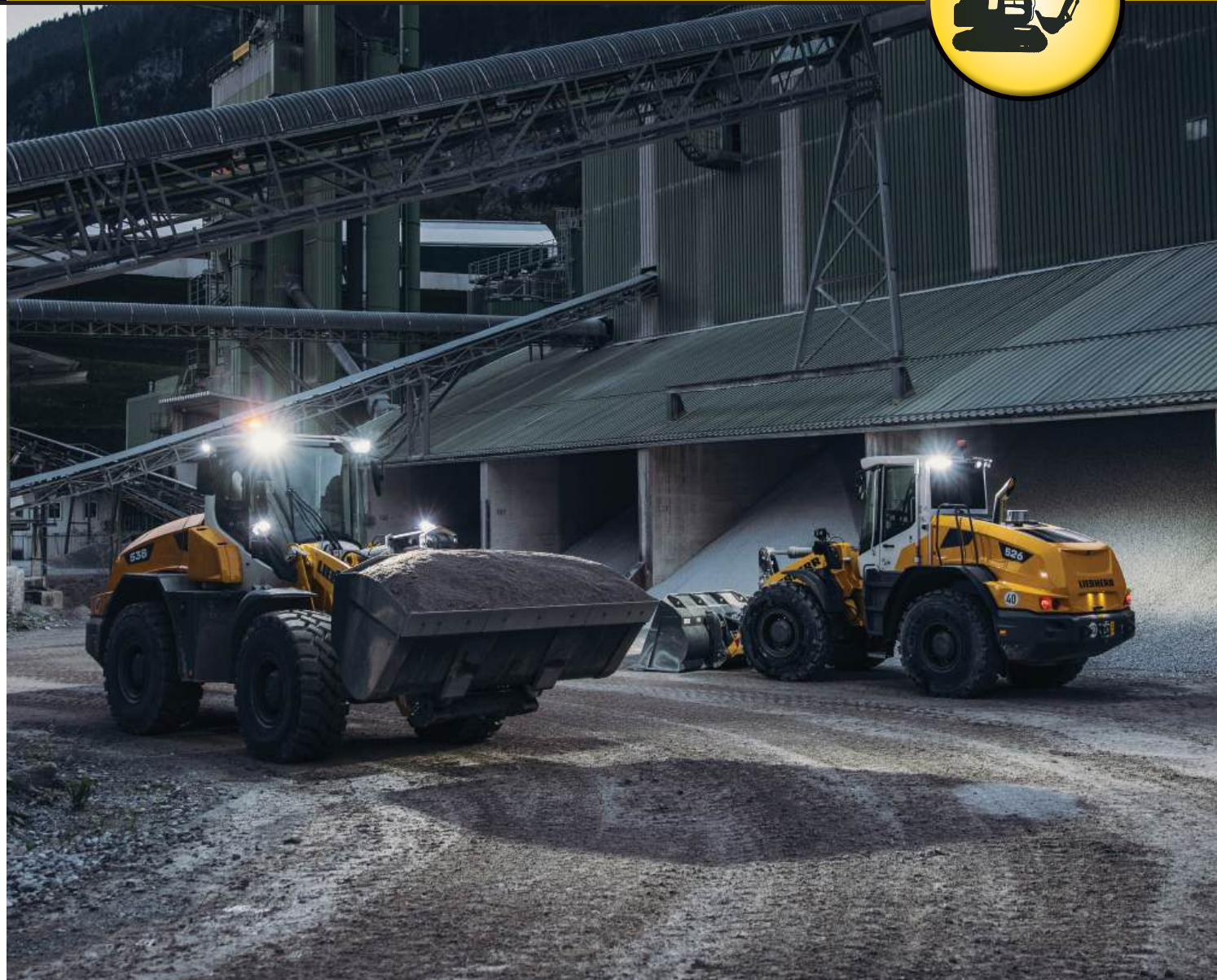


EARTHMOVING/CONSTRUCTION

In the area of earthmoving, **LIEBHERR** offers an extensive program of hydraulic excavators and duty cycle crawler excavators, crawler tractors and wheel loaders. Highest quality standards are achieved by in-house production of main components.

These components include, for example, the drive and control technology systems comprising of diesel engines, hydraulics and gearboxes.

A full international service network ensures qualified customer services at every operational site along with the supply of original spare parts.





MINING/CONSTRUCTION

While reliability has become synonymous with **BELL**, the main reason that they're the best ADT sellers in the industry is that they simply deliver the lowest cost per ton. The flagship B50E and B60E ADT has been specifically designed for mining and, together with an ideally-matched Excavator, strengthens **BELL'S** product offering and support to this sector.

Their comprehensive range also includes; Low Profile ADT's (for underground mining), Motor Graders, Articulated Haulers and Tracked Carriers.

BELL'S flexibility, technical know-how and 50 years of providing tailor made, innovative solutions and support ensures absolute peace of mind, not to mention the performance leadership, safety, ease of operation and fuel efficiency of their wide equipment range.



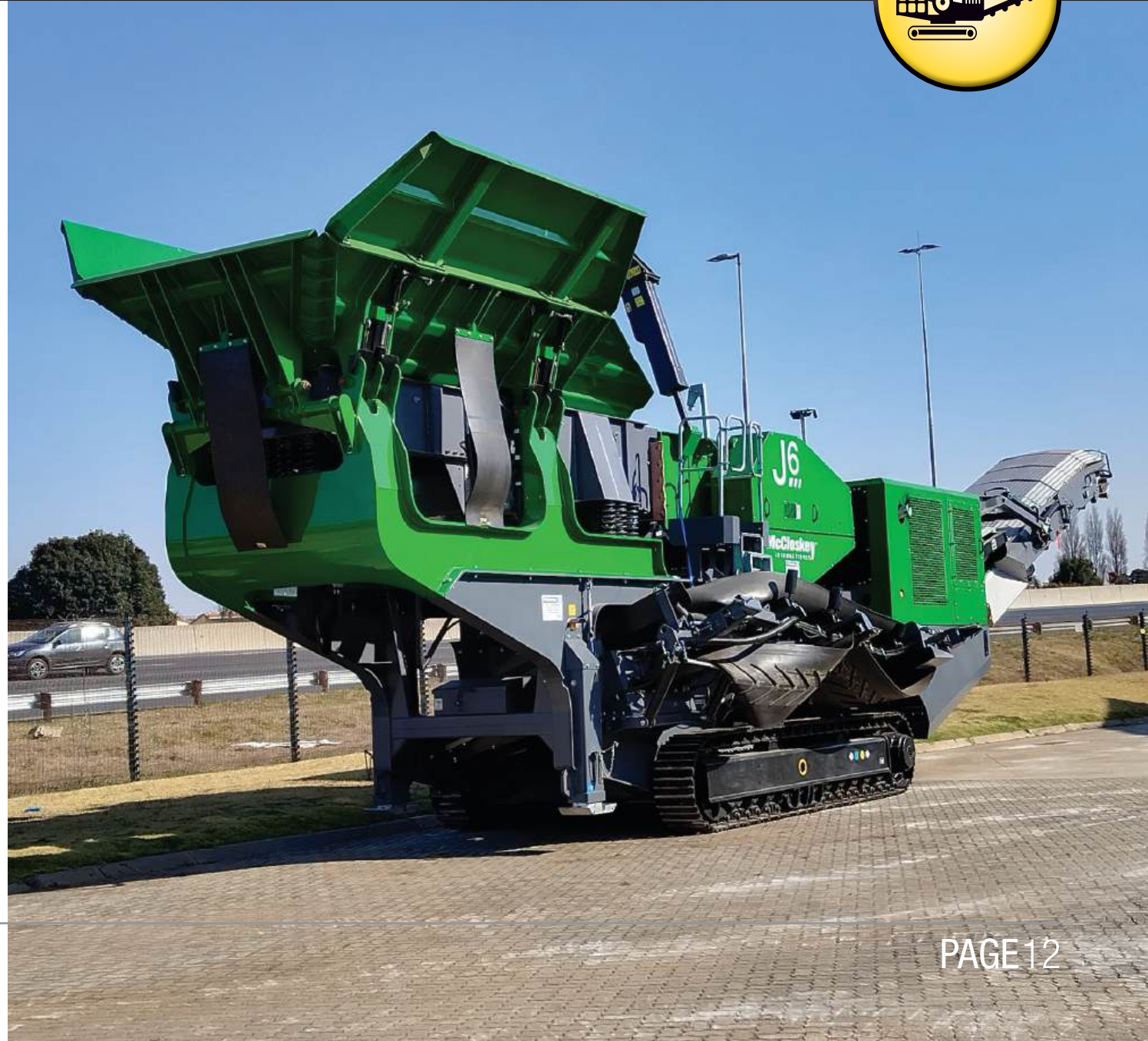


CRUSHING/SCREENING

McCLOSKEY International leads the screening and crushing industry with a complete line of mobile equipment including: crushers, screeners, trommels, stackers/conveyors and washing systems. Built with power and durability the products are deployed to a wide range of industries which include compost screening, aggregates processing, waste recycling, construction & demolition, landscaping and wood recycling.

Since the company's inception in 1986, **McCLOSKEY** International has been a pioneer in design and innovation, with patents granted on many of its designs, including radial stockpiling conveyors and the lift-axle mechanism for maximum stockpiling flexibility.

McCLOSKEY trommels high production rates, versatility, ease of use and unrivalled strength has ensured the popularity with top soil producers, contractors and landscape supply operators.





BLASTING/TUNNELING/ FORTIFYING

MACLEAN is the world's largest Canadian-based underground mining equipment manufacturer. The constant across the shifting sands of time and geography is the **MACLEAN** commitment to pursuing engineered solutions that make the underground environment safer and more productive.

When they create what they call **MACLEAN** 'Application Intelligence' for the mining sector, they are leveraging multi-disciplinary engineering expertise, continental manufacturing capacity, and decades of mining knowledge, to deliver safety and productivity enhancing solutions to the end-users who operate and maintain our products in underground mines around the globe.





UNDERGROUND MINING CONSUMABLES AND FITTINGS

DRILLCUBE is an innovative Australia-owned company setting a new benchmark in the global underground mining industry.

DRILLCUBE's executive team has more than 100 years of experience in underground mining, leading by example with a strong track record of transparency and ethical practice across the supply chain.

As mining's 'one-stop-shop (in a box)', we're able to streamline our client's mining operations — delivering all equipment, tools and consumables in one convenient monthly order at highly competitive prices.

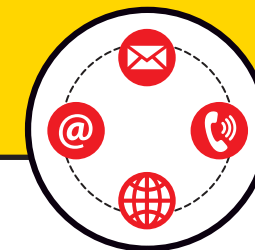
The flow-on benefits to the mining operation include supply-chain constraints (due to lags or delays) being prevented, production forecasts bare no longer at risk, inventory management is reduced, all-in costs are lowered, and overall profitability / NPV of the asset is increased.



OUR CONTACTS



www.kanuequipment.com



BOTSWANA: Plot 68284, Phakalane, Gaborone, Botswana

☎ +267 395 2291



CAMEROON: Axe Lourd Yassa, Face Entrée Satom, Cameroun

☎ +237 680 522 988



DRC: 17 Avenue Munguzi, Quartier Industriel, Commune de Kampemba, Lubumbashi, Haut - Katanga, DRC ☎ +243 (0)82 000 6286



GHANA: Plot No. 22B, Motorway Extension, South Legon Commercial Area, Accra, Ghana

☎ +233 (0) 303 977 361



INTERNATIONAL: Switzerland

☎ +41 26 913 00 10



CÔTE D'IVOIRE: Rue Koffi Alphonse - Zone 4, 30 BP 115 Abidjan 15, Côte d'Ivoire ☎ +225 07 25 23 00 98 68



KENYA: Unit 7, Savannah Business Park, (Opp. JK International Airport), Mombasa Road, Nairobi, Kenya ☎ +254 745 709 587



NAMIBIA: 8082 Maxwell Street, Southern Industrial Area, Windhoek, Namibia

☎ +264 61 226 021



MALI: Place CAN Aci 2000, Immeuble Tidiane Gamby, Bamako, Mali

☎ +223 75 44 99 75



SIERRA LEONE (LIBERIA): Cockerill South 16 (off Wilkinson Road), Freetown, Western Area, Sierra Leone ☎ +232 99 00 18 02



SOUTH AFRICA: JOHANNESBURG | Aero Star Business Park,

Portion 6, 219 Jet Park Road, Witfield, Johannesburg ☎ +27 (0)11 826 6710

BLOEMFONTEIN | 5 Frikkie van Kraayenburg, East End, Bloemfontein

☎ +27 (0)51 432 3978

CAPE TOWN | Cnr Rome Road & London Circle, Brackengate Business Park, Brackenfell, Cape Town ☎ +27 (0)21 949 7442

EAST LONDON | Meises Halt, East Coast Resort Road, East London

☎ +27 (0)43 732 1902

KWA-ZULU NATAL | 54 Alexander Road, Westmead, Pinetown, Durban

☎ +27 (0)31 700 8278

PORT ELIZABETH | 135 Old Cape Road, Greenbushes, Port Elizabeth

☎ +27 (0)41 453 1819



TANZANIA: Plot No. 92, Kipawa Industrial Area, Nyerere (Pugu) Road, Dar es Salaam, Tanzania, ☎ +255 683 091 129



ZAMBIA: Matuka Road, Kitwe, Zambia

☎ +260 967 770 678 ☎ +260 764 939 429



ZIMBABWE: HARARE | 52 Glenara Avenue, Eastlea, Harare ☎ 0867 700 8750

BULAWAYO | 12 Coventry Street, Belmont, Bulawayo ☎ 0867 721 2085

HWANGE | Soonga Road, Hwange ☎ +263 (0)77 327 3949



KANU EQUIPMENT

EXPERIENCE THE SUPPORT

The images shown are for illustration purposes only and may not be an exact representation of the product ordered and supplied. E&OE.

GROUP COMPANY PROFILE | MINING