



# KANU EQUIPMENT

EXPERIENCE THE SUPPORT

---

**COMPANY PROFILE** | SOUTH AFRICA



# KANU EQUIPMENT

EXPERIENCE THE SUPPORT

The story of Kanthu N'khama is an African folklore tale about a small bird that flies into a dark forest and overcomes challenges to emerge wiser and more resilient. It is the story of how 'Hard work pays off' and is the inspiration behind Kanu Equipment. Launched in 2012, Kanu Equipment and its hummingbird logo stands for the 800 men and women across Africa who live by the founding values of integrity, flexibility, continuous improvement and exceptional customer support.



# OUR VISION



At Kanu Equipment we pride ourselves on our ability to provide top-of-the-range machinery, world-class maintenance teams and high spare part availability across 17 countries in Africa.

**OUR VISION - To be the Most Supportive Dealership on the African Continent.**

**OUR MISSION -** We aim to reduce the cost of operations on the continent by providing innovative solutions, timeous on-site technical support and access to a wide range of genuine OEM spare parts.

Our entrenched relationships with **Liebherr, Bomag, McCloskey, Superior, New Holland** and **Kemach Forklifts**, and our competent, highly skilled service technicians puts us in the prime position to offer the very best customer service and support with minimal machine downtime, maximum output and a positive ROI.

Our vast experience in underground and open cast mining affords us the utmost confidence to support any operation in the toughest of African climates and territories.

Our facilities are professionally staffed and well-equipped to support you when and where it matters most.

A handwritten signature in black ink, appearing to read 'S. Smithyman', written over a horizontal line.

STEPHEN SMITHYMAN  
Group CEO



STEPHEN SMITHYMAN  
Group CEO

# OUR VALUES



We will not compromise our values, ethics, integrity, passion or professionalism in our dealings with all stakeholders.



## ACCOUNTABILITY

We are involved, responsible and dedicated to our organisation, its investors and our customers.



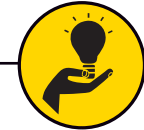
## INTEGRITY

We are committed to being honourable and disciplined.



## COURAGE

We are bold, always striving to believe in bigger and better achievements.



## INNOVATION

We are determined to find the best available solutions to solve problems quickly and effectively.



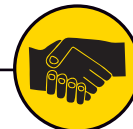
## SUPPORT

We are in the industry of service and know that our primary focus on offering the very best levels of support is what sets us apart from our competitors.



## LEADERSHIP

We endeavour to work smartly, always finding ways to improve our service offering, to do more – faster.



## PARTNERSHIP

We try to find common ground in all our interactions, as we all like to work with people that we can relate to.



## COMMITMENT

We are deadline-driven to achieve maximum productivity on all levels.

# OUR RAPID EXPANSION

Kanu Equipment began its work in 2012 and the company's reputation of providing strong customer support and reliable equipment and spares is expanding into Africa and even further across the globe.

 **2012**

Kanu Equipment was founded in the CONGO with the purchase of a much sought-after LIEBHERR DOZER, the first of its kind in central Africa.

 **2013**

Dealership rights for LIEBHERR EARTHMOVING and MOBILE CRANES and BELL were awarded.

 **2014**

Opened the IVORY COAST and GHANA dealerships.

 **2015**

Branched into SIERRA LEONE, LIBERIA and CAMEROON and adopted the WIRTGEN and TIGERCAT brands.

 **2016**

Took ownership of the BOTSWANA dealership and claimed a 50% stake in the ZIMBABWE branches.

 **2017**

Expanded into KENYA and TANZANIA and adopted the CASE IH and CASE CE brands in certain territories.

 **2018**

Took ownership of the NAMIBIA dealership and opened in the DRC.

 **2019**

Adopted the MANITOU brand in Botswana and NORMET brand in certain territories.

 **2020**

COVID OUTBREAK didn't break the Kanu spirit and we continued strong throughout the pandemic so our customers could "Experience The Support"

 **2021**

Expanded into UGANDA and RWANDA

 **2022**

Kanu Equipment turns 10 years old - and going strong

 **2023**

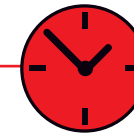
Acquisition of KEMACH EQUIPMENT South Africa. Adopted the MCCLOSKEY, BOMAG and KEMACH FORKLIFTS brands in certain territories and NEW HOLLAND\* (South Africa ONLY). Expanded into ZAMBIA.

 **2024**

Adopted the SUPERIOR brand in certain territories. Expanded into MALI.

 **2025**

Adopted the HYUNDAI brand in Zambia ONLY. Adopted the MACLEAN & DRILLCUBE brands.



## 2026 & BEYOND

With our continual support and hard work in earning our OEM's and Customer's trust, there are no limits to where Kanu Equipment can go from this point on - The Bird has spread it's wings and there is no stopping it now.

***OUR VISION "To be the Most Supportive Dealership on the African Continent" is currently being realised.***

# OUR KEY NUMBERS



Kanu Equipment has **800 EMPLOYEES** who are dedicated in providing timeous SERVICE DELIVERY and superior CUSTOMER SUPPORT.



**80%** Aftermarket Parts Market needs fulfillment

**80%** fulfillment of Market Equipment needs

**85%** on time parts delivery



presence in

**17 COUNTRIES**

across Africa



**1 FOCUSED** mindset



**3 TRAINING CENTRES** (regional)



**+80M \$** invested



**10 WORLD-CLASS MINES** supported



**25 WORKSHOPS** across the group



more than **170** qualified **TECHNICIANS**



**2140 FLEET** (active)  
**300 MODELS** (various)



## FOCUS AREAS



Access to Finance with Best Interest and Payment Terms



OEM & Aftermarket Spares



Dedicated Technical Teams

# OUR NETWORK & TEAMS



Kanu Equipment has expanded into **17 COUNTRIES**, organised as regional teams, supported by Finance in Mauritius and Sales in Europe.

Our teams are dedicated to performance delivery and service excellence at its best. We live true to our motto “EXPERIENCE THE SUPPORT” which resonates from the CEO throughout the organisation.



# OUR SERVICE & SUPPORT PROMISE



We at Kanu Equipment are dedicated to the supply of competitively priced spare parts and maintenance support to offer our customers an advantageous extension to their business operations. We guarantee 24/7 support with a maximum 48hr delivery promise on top-line stock items held in country.

We hold local in-house OEM product and technical training, and apprenticeship programmes.

We offer:



**STRONG OEM PARTNERSHIPS**



**LOCAL UPSKILLING PROGRAMMES**



**SKILLED ON-SITE SUPPORT**



**ON-SITE SPARES AVAILABILITY**



**REAL-TIME EQUIPMENT MONITORING**



**OPERATOR SUPERVISION**



**IMMEDIATE RESPONSE**



**STREAMLINED LOGISTICS**

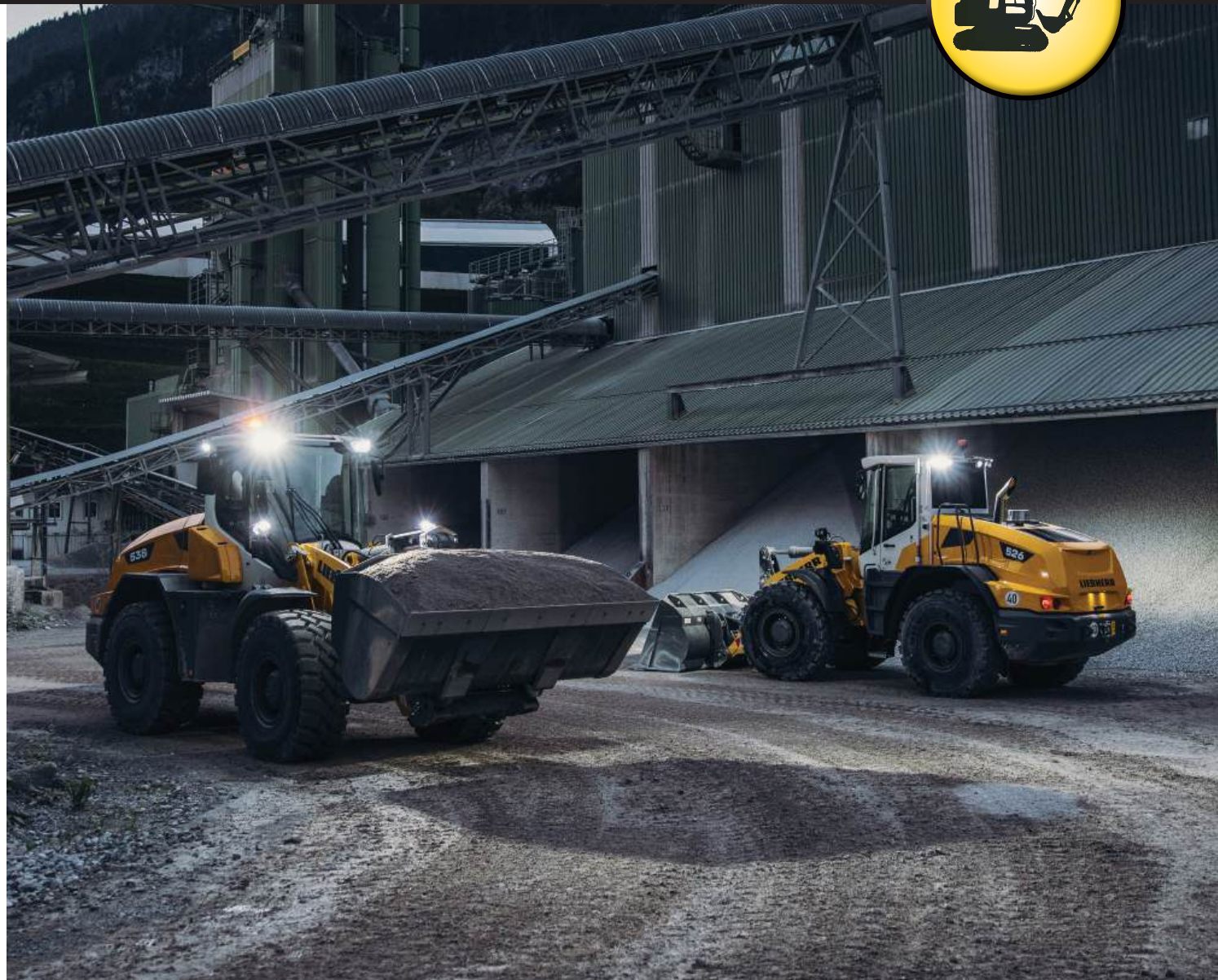


## EARTHMOVING/CONSTRUCTION

In the area of earthmoving, **LIEBHERR** offers an extensive program of hydraulic excavators and duty cycle crawler excavators, crawler tractors and wheel loaders. Highest quality standards are achieved by in-house production of main components.

These components include, for example, the drive and control technology systems comprising of diesel engines, hydraulics and gearboxes.

A full international service network ensures qualified customer services at every operational site along with the supply of original spare parts.





## ROAD CONSTRUCTION/ COMPACTION

**BOMAG** is the world market leader in the field of compaction technology and manufacturer of machines for the compaction of soil, asphalt and refuse. Stabilizers/Recyclers, milling machines and pavers round off our portfolio.

Compaction equipment from **BOMAG** is used in areas as landscaping to the entire range of road construction and heavy dam construction. Furthermore, **BOMAG** provides special solutions for use on landfill sites of all sizes, for recycling damaged asphalt pavement, and for soil stabilisation.

**BOMAG** is world leader in the measuring, documentation and control of compaction work during and after the compaction process. **BOMAG** machines fulfill wide ranging requirements with extensive equipment variations and a worldwide internal network of compaction experts.





## CRUSHING/SCREENING

**McCLOSKEY** International leads the screening and crushing industry with a complete line of mobile equipment including: crushers, screeners, trommels, stackers/conveyors and washing systems. Built with power and durability the products are deployed to a wide range of industries which include compost screening, aggregates processing, waste recycling, construction & demolition, landscaping and wood recycling.

Since the company's inception in 1986, **McCLOSKEY** International has been a pioneer in design and innovation, with patents granted on many of its designs, including radial stockpiling conveyors and the lift-axle mechanism for maximum stockpiling flexibility.

**McCLOSKEY** trommels high production rates, versatility, ease of use and unrivalled strength has ensured the popularity with top soil producers, contractors and landscape supply operators.





- CRUSHING • VIBRATORY • SCREENING • CONVEYING • WASHING
- FUSION MODULAR PLATFORMS • CONSTRUCTION MANAGEMENT
- PORTABLE PLANTS • SHIP LOADING CONVEYORS • CONVEYOR PARTS



## BULK MATERIAL PROCESSING/ HANDLING

**SUPERIOR INDUSTRIES** provides equipment options that include both movable/portable units and stationary units, to suit different operational needs.

- **Mobile / Portable Machines**

They offer mobile screening plants (portable vibratory plants) that can be moved from site to site.

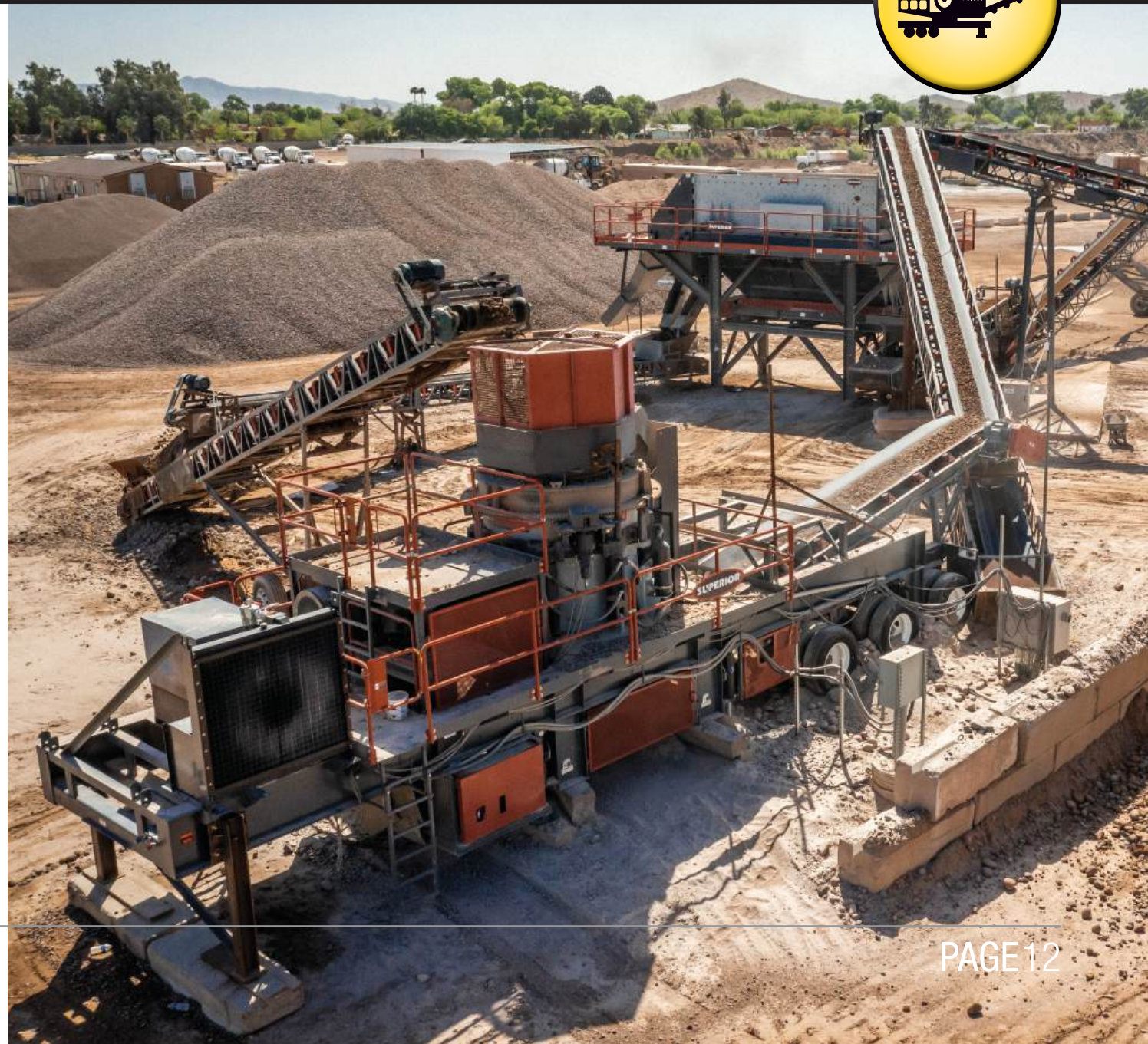
They also produce mobile conveyors such as the RazerLink® Mobile Conveyor with tracks or tires, capable of relocating on site.

They have developed mobile ship-loading conveyors that include truck unloading capability – i.e. multi-purpose mobile systems.

- **Static / Stationary Machines**

In their conveying equipment portfolio, they list stationary conveyors (stationary truck unloaders, in-plant conveyors, stationary stacking conveyors) in addition to mobile conveyors.

They also design static screening machines (e.g. horizontal / inclined screens) used in fixed installations (“static producers”) and have made design enhancements for static applications.





## CONSTRUCTION

**NEW HOLLAND** Construction is a key player in the construction equipment industry born of the rich heritage of brands that made the history of this sector. With a well-established dealer network throughout the country, **NEW HOLLAND** Construction is able to provide comprehensive service and technical support to its diverse customer base throughout the country.

In partnership with a worldwide network of dealers, the company delivers products and services that meet all customer requirements such as productivity, safety, environmental performance, fuel efficiency and cost effectiveness. The company knows its customer's business which is why it provides them with a full line of innovative products and services designed for the specific applications of their industry.

**ONLY AVAILABLE  
IN SOUTH AFRICA**





## MATERIAL HANDLING

The **KEMACH FORKLIFTS** range, in partnership with Anhui HELI CO., LTD, will complement our existing quality earthmoving products. The range offers customers a South African forklift warranty first – a five years/12,000hr warranty on the complete machine, and not just on certain parts of the machine.

Anhui HELI CO., LTD is the biggest forklift manufacturer in China and complies with all European standards as well as being ISO approved.

The **KEMACH FORKLIFTS** range has Japanese engines, Anhui HELI CO., LTD built ZF transmissions and robotically manufactured chassis, ensuring premium brand quality at very competitive pricing for the materials handling markets.





# EXPERIENCE THE SUPPORT with SOUTH AFRICA

## JOHANNESBURG

Aero Star Business Park,  
Unit 6, 219 Jet Park Road,  
Witfield, Boksburg

Tel: +27 (0)11 826 6710

## BLOEMFONTEIN

5 Frikkie van Kraayenburg,  
East End

Tel: +27 (0)51 432 3978

## KWA ZULU-NATAL

54 Alexander Road,  
Westmead,  
Pinetown

Tel: +27 (0)31 700 8278

## CAPE TOWN

Cnr Rome Road and London Circle  
Brackengate Business Park,  
Brackenfell

Tel: +27 (0)21 949 7442

## PORT ELIZABETH

135 Old Cape Road,  
Greenbushes

Tel: +27 (0)41 453 1819

## EAST LONDON

Meises Halt,  
East Coast Resort Road

Tel: +27 (0)43 732 1902

*The images shown are for illustration purposes only and may not be an exact representation of the product ordered and supplied. E&OE.*



[www.kanuequipment.com](http://www.kanuequipment.com)